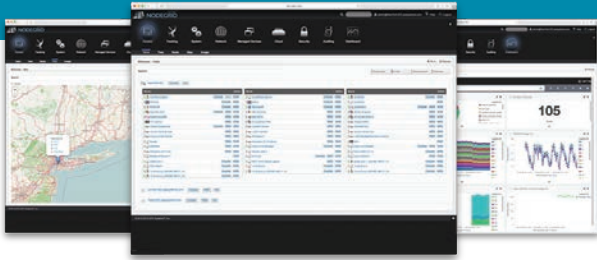




# NodeGrid Manager

Infrastructure Management Software



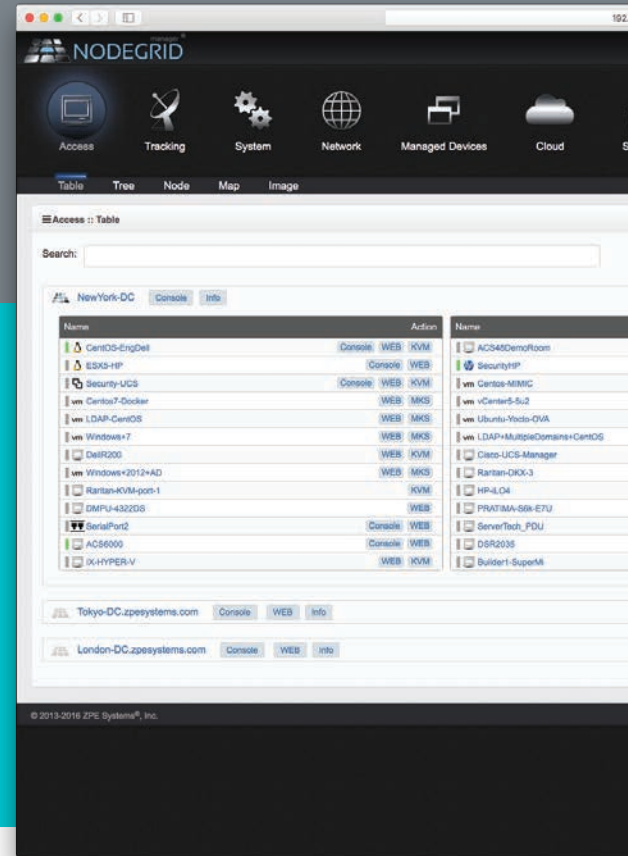
## IT Management Needed Change

IT managers have too many applications - Specialized tools for specific products; Proprietary hardware and software means each IT manager has to learn more than one tool. Power, VMs and KVMs are all managed separately by manufacturers' tools...

**Until NodeGrid Manager came along.**

## Software Defined, Vendor Neutral

NodeGrid Manager, provides vendor neutral access and management, with a single pane of view dashboard, where all your IT devices can be managed the same.



## Manage it all with NodeGrid Manager



Power



VMs



KVM



Console Servers



Service Processors



Storage

## Applications

- Data Center
- Test Lab Environments
- Retail & Remote Offices
- Finance, Healthcare, Biotech
- Telecommunications
- Internet, Social, Search

**Installs Quickly** - Bootable ISO image with no dependencies

**Set Your Own Rules** - Define business and technology policies for appropriate user access

**Watch your Infrastructure Organize Itself** - NodeGrid Manager auto-discovers data center assets and matches them against your rules to build dynamic physical and virtual device access groups

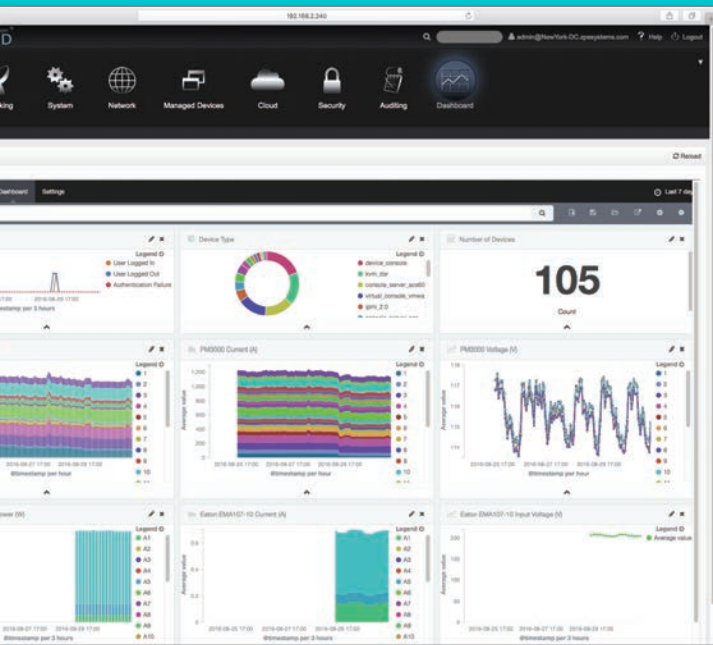
**Peace of Mind** - NodeGrid Manager proactively monitors your multi-vendor IT infrastructure for console issues and keeps you in charge with instant access, control and power management

## Normalized Commands = Reduced Training Costs

Our Interface Abstraction Layer means your "Power Off" command (Ctrl + P or Power Off) will be received, no matter the vendor. Command Line or Web GUI, it doesn't matter. Engineers no longer need to know vendor specific commands with NodeGrid Manager. Simply perform a request at a click of a button.

It's just another way NodeGrid Manager makes life easy.

# Ctrl + P Power Off Off



## One Management Platform, Unlimited Possibilities

- Secure access and control of virtual and physical IT devices
- DeviceURL™ bookmarks
- NodelQ™ elastic asset search
- Cloud Clustering™ with horizontal and vertical scaling
- Shared Access with Console Data Logging
- Service Processor Logging of Events and Sensors
- Event notification and Alarms
- Out-of-band Power Management
- Auto-discovery of virtual and physical devices
- Granular Policy-based Authentication and Authorization via AD/LDAP
- Web and CLI single normalized interface
- Keyboard, Video, Mouse Proxy (No JAVA)
- Monitoring and Dashboard

## Ordering Information

To purchase NodeGrid Manager first choose your license plan. NodeGrid Manager is licensed on a per managed device and/or per feature basis. A Managed Device is any Physical or Virtual device defined under NodeGrid Manager requiring Access and Control. ZPE Systems offers NodeGrid Manager licenses in packs of 50, 100, 250, 500 or 1,000+ managed devices. Enterprise site and subscription licensing are also available.

**NGM-SSB-L1-BASE-100-MD** - 100 Managed Devices - 1 Year Subscription License

**NGM-SSB-L1-BASE-250-MD** - 250 Managed Devices - 1 Year Subscription License

**NGM-SSB-L1-BASE-500-MD** - 500 Managed Devices - 1 Year Subscription License

**NGM-SSB-L1-BASE-1000-MD** - 1,000 Managed Devices - 1 Year Subscription License

**NGM-SSB-L1-BNDL-5000-MD** - 5,000 Managed Devices - 1 Year Subscription License

**NGM-SSB-L1-BNDL-10000-MD** - 10,000 Managed Devices - 1 Year Subscription License

**NGM-SSB-L1-BNDL-15000-MD** - 15,000 Managed Devices - 1 Year Subscription License

**NGM-SSB-L1-BNDL-20000-MD** - 20,000 Managed Devices - 1 Year Subscription License

